

Customer: Date: 9/29/2009
 Contact: From:
 Telephone: Company:
 Cell: Return Tel:
 Fax: Return Fax:
 Job:
 Quote #: 0

GIVEN DATA**Construction**

Item: DXM1-3
 Coils Per Bank: 1
 Tube OD IN: 5/8
 Style: EJ
 Fins Per Inch: 8
 Rows: 4
 Fin Surface: Optimize ABC
 Fin Height (IN): 31.50
 Finned Length (IN): 27.00
 Tubing Mat. (IN): 0.020 Copper
 Fin Mat. (IN): 0.0075 Aluminum
 Circuiting: Optimize
 Face Area (SQ FT): 5.91

Air Side

Air Flow (Sft³/min) 3,000
 Altitude ft: .00
 Ent. Air DB/WB °F: 95.00 / 78.00
 Lvg. Air DB/WB °F: .00 / .00
 Total / Sensible MBH: 120.0 / .00
 Max Air PD "H2O: .00

Refrigerant Side

Refrigerant: 410A
 Super Heat °F: 8.00
 Saturated Suction Temp °F: 45.00
 Liquid Temp °F: 110.0

| O U T P U T D A T A | | M o s t E c o n o m i c a l | | | S p e c i f i e d C o i l | | |
|-----------------------|---------------------|-------------------------------|--------|--------|-----------------------------|-----------|--------|
| | | Coil 1 | Coil 2 | Coil 3 | Coil 4 | ✓ Coil 5 | Coil 6 |
| Model Number: | | | | | | 5EJ0804B | |
| Air Velocity: | (Sft/min) | | | | | 507.9 | |
| Total Capacity: | MBH | | | | | 146.1 | |
| Sens. Capacity: | MBH | | | | | 85.19 | |
| Lvg. Air DB: | °F | | | | | 68.71 | |
| Lvg. Air WB: | °F | | | | | 65.87 | |
| Standard APD | "H2O | | | | | .40 | |
| Code 18 / 19: | | | | | | 7010/5 | |
| Suction Conn.: | IN | | | | | (2) 1.625 | |
| Liquid Conn 1: | IN | | | | | (2) 0.625 | |
| Liquid Conn 2: | IN | | | | | N/A | |
| Refr. PD: | lbf/in ² | | | | | .66 | |
| Refr. Velocity: | ft/min | | | | | 764.6 | |
| Weight: | lbm | | | | | 97.00 | |
| Notes: | | | | | | BCJKMPQ | |
| | | | | | | | |
| | | | | | | | |

Notes:

B) Rated In Compliance With ARI 410.
 C) Coil Not Within Certified ARI Directory.
 J) Coil Will Be Supplied With Multiple Distributors.

K) Special Circuiting, Dead Tubes May Be Required, Consult Factory.

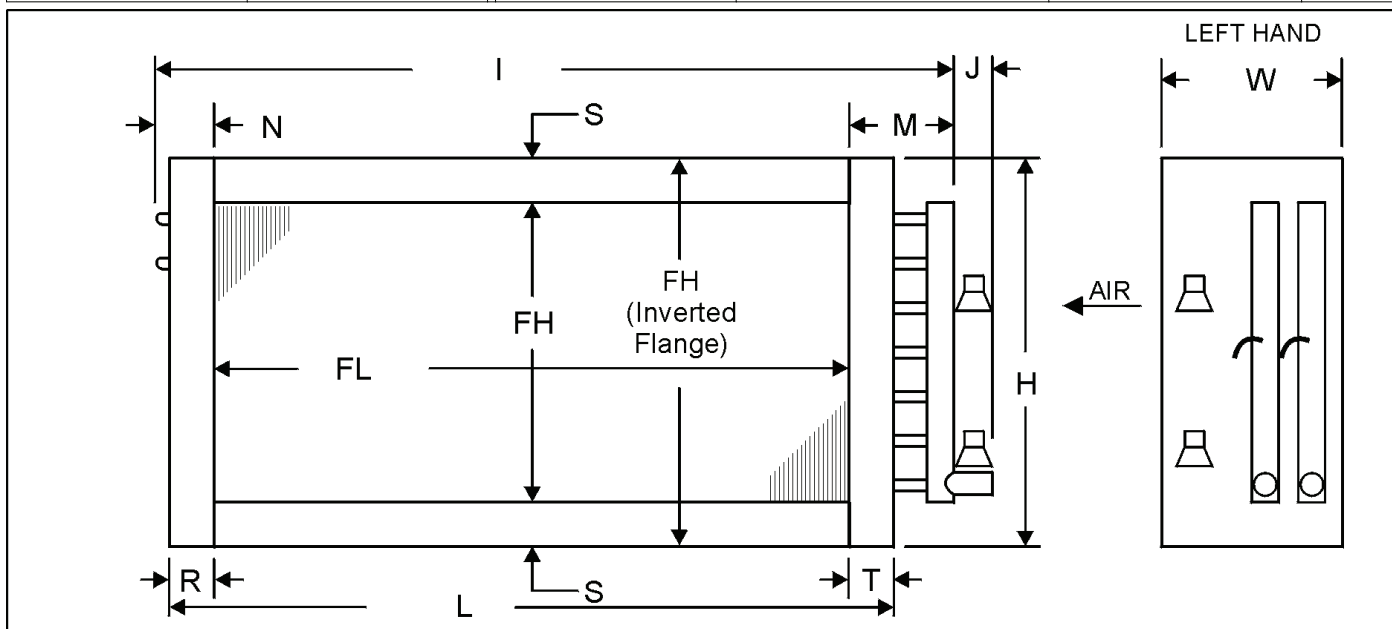
M) Coil rating valid for Heatcraft coils only.
 P) Refrigerant velocity is less than 1,000.0 ft/min
 Q) If evaporator is used in a heatpump application, change tubing material to 5/8 Stainless Steel or 5/8 Carbon Steel or select a 3/8 OD coil.

Customer:
 Contact:
 Telephone:
 Cell:
 Fax:
 Job:
 Quote #: 0

Date: 9/29/2009
 From:
 Company:
 Return Tel:
 Return Fax:

| ITEM | QTY | MODEL NUMBER | | | | | FL (IN) | HAND |
|--------|-----|--------------|-----|------|-----|---------|---------|------|
| | | TYPE | FPI | ROWS | FIN | FH (IN) | | |
| DXM1-3 | 1 | 5EJ | 08 | 04 | B | 31.50 | 27.00 | Left |

| MATERIALS OF CONSTRUCTION | | OPTIONS | | | | |
|---------------------------|------------------|----------------------|---------|--|---------------------|----|
| Fin | 0.0075 Aluminum | Coating | None | | Nitrogen Charge | No |
| Tube | 0.020 Copper | Casing Type | Flanged | | Moisture Eliminator | No |
| Casing | Galvanized Steel | Bypass Kit Size | None | | Mounting Holes | No |
| Conn. Material | Copper | Distributor Location | | | Label Kit | No |
| Conn. Type | Sweat | Distributor Tube | 0.25 | | | |
| Conn. Size | 1.625/0.875 | Nozzle Number | 4 | | | |
| | | Number of Circuits | 10 | | | |



| DIMENSIONAL DATA(IN) | | | | | | | | | | |
|----------------------|-------|------|-------|------|------|------|------|------|------|-----|
| H | I | J | L | M | N | R | S | T | W | SJC |
| 34.50 | 35.50 | 6.00 | 30.00 | 5.25 | 3.25 | 1.50 | 1.50 | 1.50 | 7.50 | |

NOTES:

GENERAL NOTES:

1. All dimensions are in inches.
2. Phenolic coated coils require a longer lead-time since they must be re-tested after coating.
3. .375 inch mounting holes will be provided on 6 inch centers from the centerline of the fin height and finned length. Not available when S < 0.75 inches.
4. The suction line should be connected to the lower connection on the entering air side for counterflow operation.